



ROAMINGSIM DATA WITH NOKIA MOBILE BROADBAND STICK USER GUIDE v1.0

RoamingSIM data with Nokia CS-10 USB Broadband stick.

Contents

Introduction	3
Activating your RoamingSIM Data SIM card.....	3
Installing the Nokia CS-10 Broadband USB Stick	5
Starting the Modem application	9
Configuring the Modem to connect to RoamingSIM.....	Error! Bookmark not defined.
Useful tips	13
24/7 customer support	13

Introduction

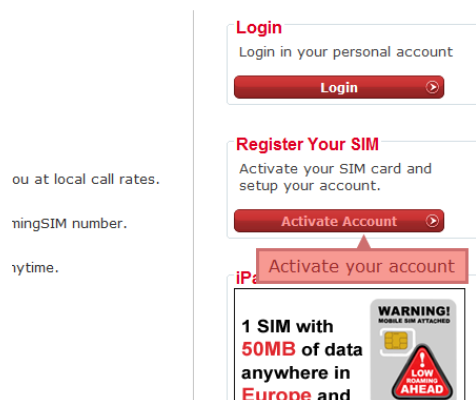
The RoamingSIM data sim card is a dedicated SIM for data use only. The SIM cards have been designed specifically to fit mobile phones and USB internet sticks for data. You cannot make phone calls, receive calls or receive SMS messages from this SIM card. You may however, send SMS messages.

This guide will take you through the installation of the Nokia Software for the USB stick and the configuration of the SIM card to use with the Nokia USB stick.

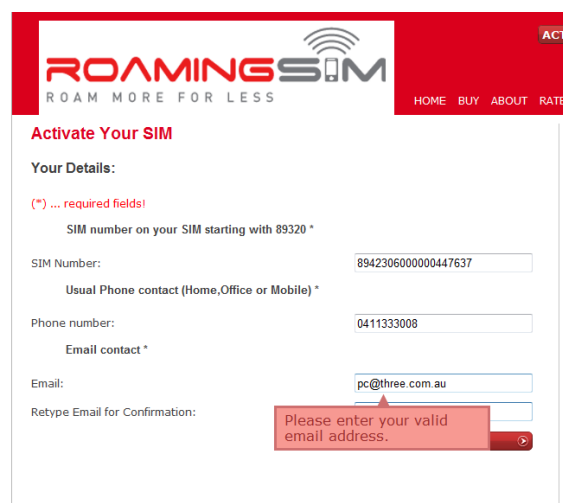
Please note that the installation and configuration process is a once off task that needs to be completed prior to your first use of the SIM and Internet stick. Once installed, you will be able to use the service by simply opening the application and entering your PIN details.

Activating your RoamingSIM Data SIM card.

1. You will need to activate your RoamingSIM Data card on the RoamingSIM website. Go to www.roamingsim.com.au. You will see a button called *Activate account*.



Click on this button to lead you to the next page which requires information about the SIM.



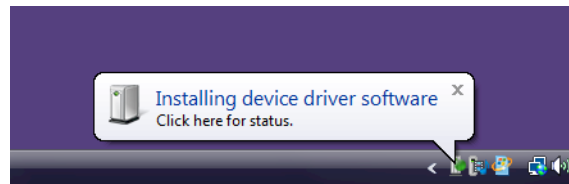
2. Fill in the details of the SIM card and your contact details. The above is an example only.
3. Once done, you will then be asked to complete a form with your address and login details which will confirm the activation.
4. Break the SIM card from the shell and insert the SIM card into the Nokia USB Stick.

Installing the Nokia CS-10 Broadband USB Stick

The Nokia CS-10 USB Broadband stick is provided in the package. The USB Stick should look like this:

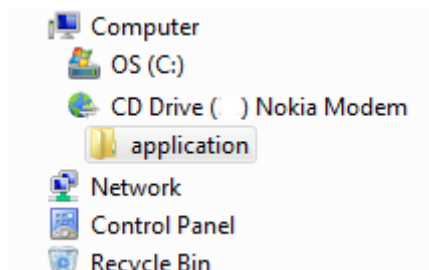


1. Insert the Roaming InternetSIM into the USB Stick and the USB stick into your PC. You should see a notification on your PC/Laptop that the USB Stick is being recognised with the following sample image:-

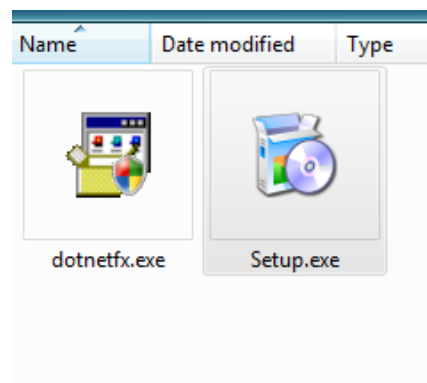


The Nokia CS-10 USB Broadband stick has inbuilt software within the USB stick. The USB stick when inserted will be regarded by many computers as a separate drive.

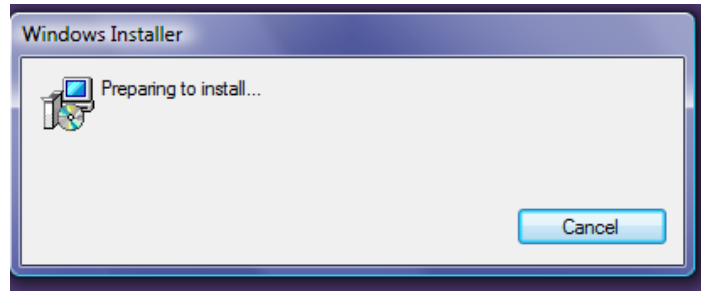
2. Open your Windows Explorer window and click on computers in your explorer left main window. You should see the Nokia drive as follows:-



3. Click on the application directory and you should see two programs below:-



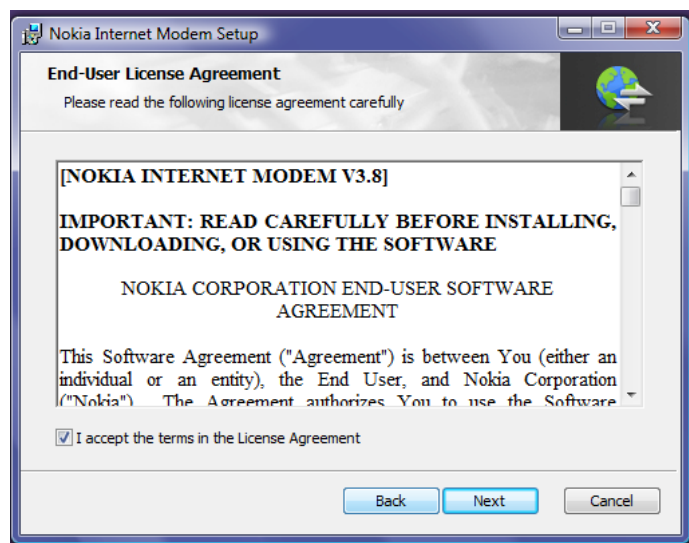
4. Double click on the setup.exe file to start the installation of the Nokia Modem software and also to install the drivers of the USB Stick. Once you double click the setup program you will start to see the following screen



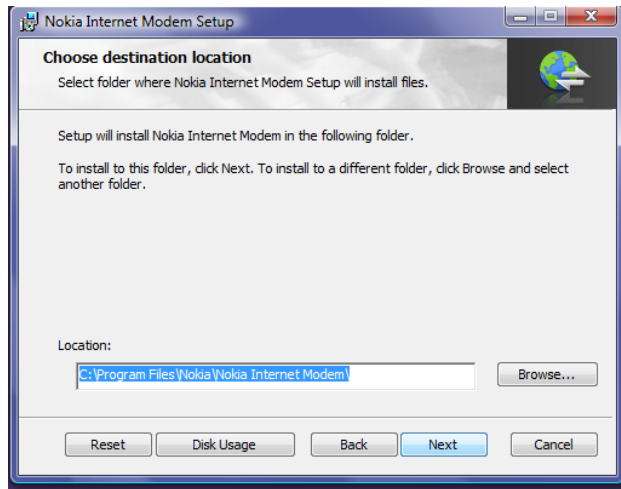
This will then lead you to the installation options



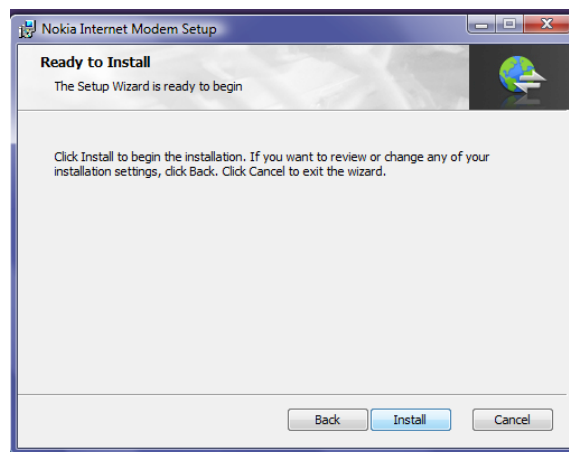
5. Click on the Next button and you will be asked to accept the terms and conditions.



6. Once you are satisfied with the terms and conditions, tick the box, I accept... and click on the Next button. The next page will be shown.

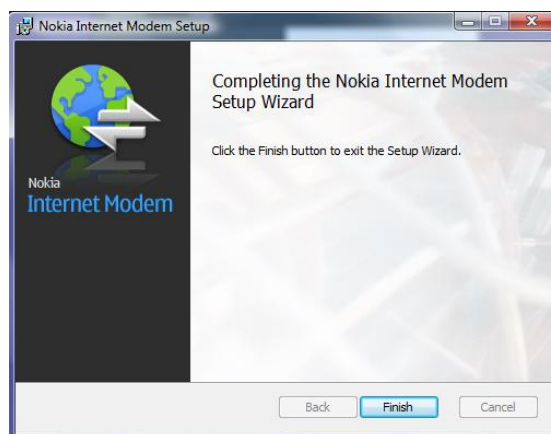


7. The destination location should be standard otherwise change to your particular needs and click on the next button to begin the install.



8. Click on the install button to begin


Once the installation is complete, you will see the following screen:-

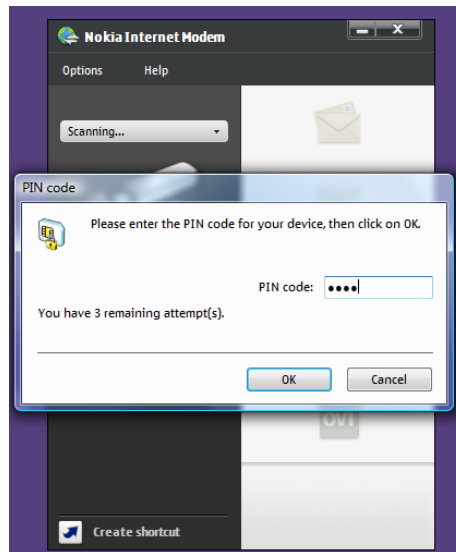


9. Click on the Finish button to close the installation procedure

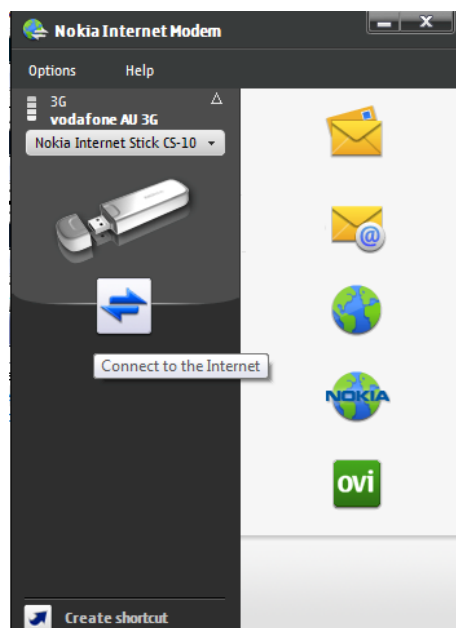
You have now successfully installed the application for the modem and the drivers for the modem.

Starting the Modem application

1. To start the application, click on the **START** button  and look for the program “Nokia Internet Modem” under the program folder “NOKIA INTERNET MODEM”
2. Ensure that your modem is plugged into the USB port of your computer. You should see the following asking for a PIN.



3. The PIN is 0000 (Four Zeros) Type in and click OK. Once done you will see the menu screen as follows:-

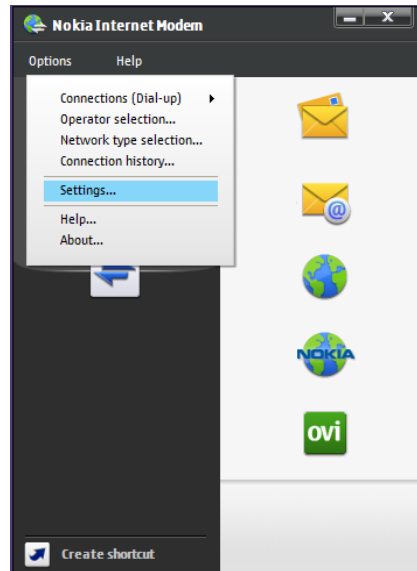


4. You should be able to see a network being connected. If you do not see a network being connected you may have to select the operator manually in the Options menu and the item Operator selection.

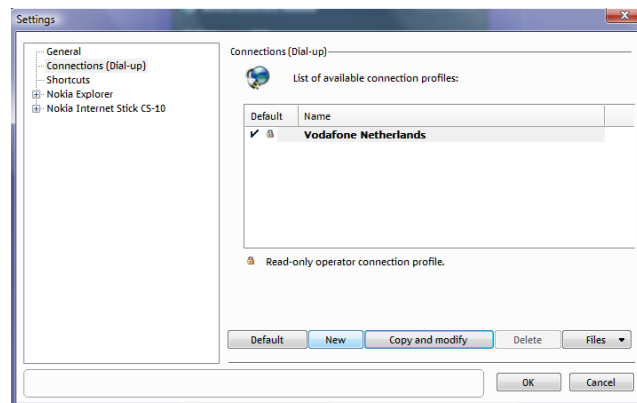
Configuring the Modem to connect to RoamingSIM

You now need to configure the modem to connect to the RoamingSIM internet service.

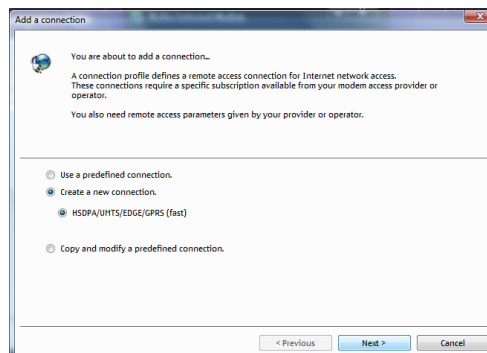
1. Click on the Options menu item to get the following:



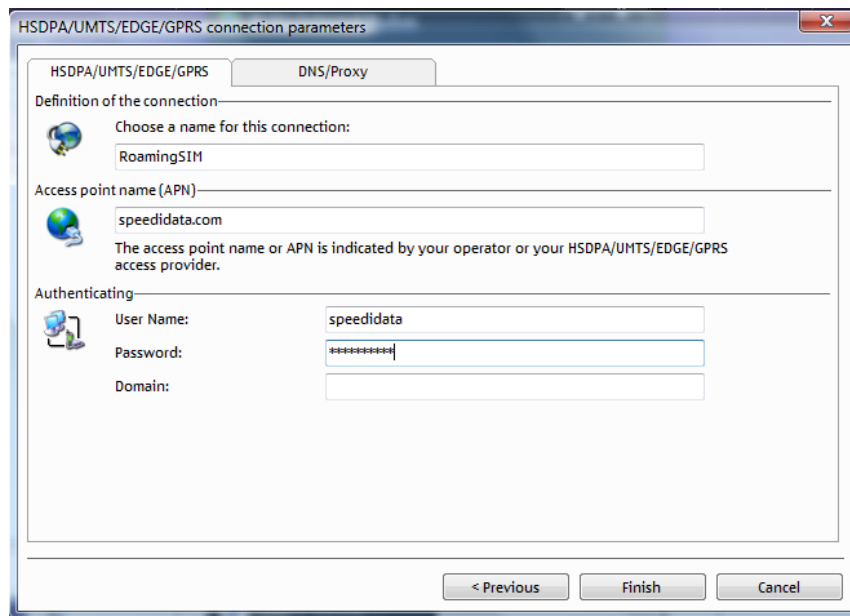
2. Click on settings to get the following screen



3. Click on the New button to create a new profile



- Now click on “Create a new connection” and click on the Next button. You will now see the next screen to configure



Type in RoamingSIM as above in the section where you are asked to choose a name for this connection.

For Access Point name (APN) type in speedidata.com

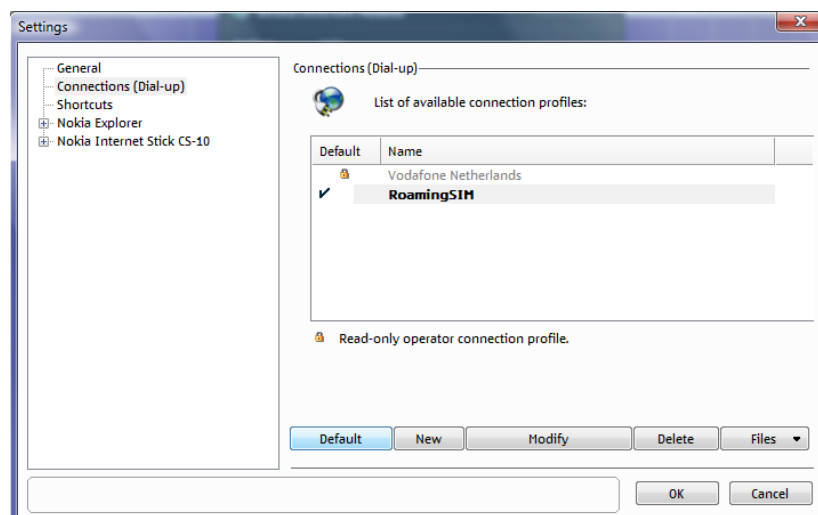
For username type in speedidata

For password type in speedidata

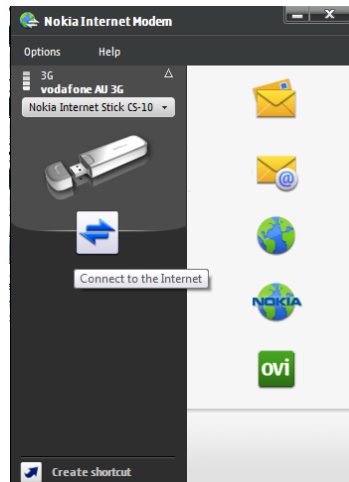
Leave Domain blank

- Click on Finish to continue.


You will now see the following screen

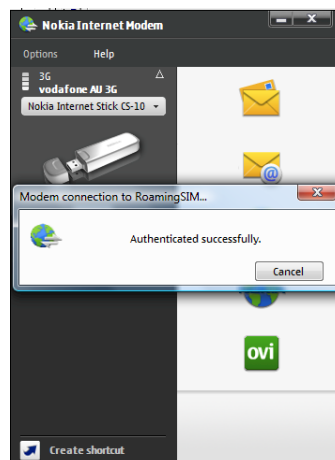


6. Select RoamingSIM and click on the Default button so that it defaults to RoamingSIM.
7. Click on OK to return to the menu.




Once you have a network connected and configured the RoamingSIM settings, you can access the internet.

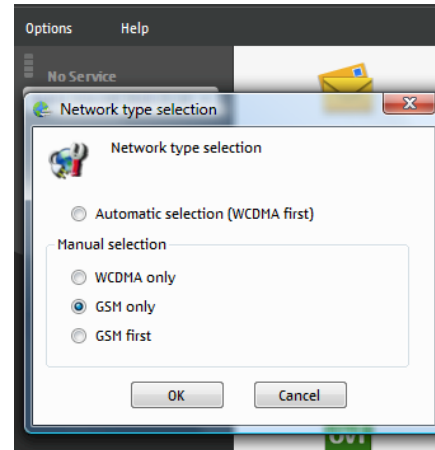
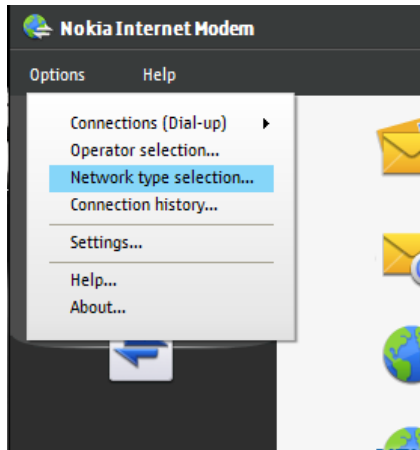
8. Click on the  button. A successful connection will show the following:-



You will also see connection statistics on the bottom right hand corner indicating your speed.

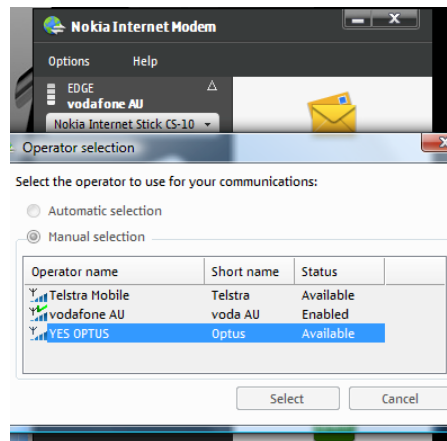
9. To disconnect click on the  button.
10. If you cannot browse or actually get any internet activity, please disconnect and change network operators as you are roaming. Choose one that works sufficiently for you.

TO change operators click on Operator selection or Network Type selection



You are able to select networks between 2G and 3G to see the best fit and connection at the time.

You will see a list of Telco’s in the country you are in so select one that works best in your area.



Useful tips

If you have trouble connecting to a network, first check that you have sufficient credit. Make sure you have network coverage

To manually search for another network, see the preferred carrier list on the coverage page at www.roamingsim.com.au

24/7 customer support

UK: +44 20 80997266
Ireland: +353 21 49711569
USA: +1 415 829 5219
Australia: +61 3 9001 5540
Email: support@roamingsim.com.au